

BSDCITY

Big City. Big Opportunity

ICE INDONESIA
CONVENTION
EXHIBITION
BUSINESSPARK

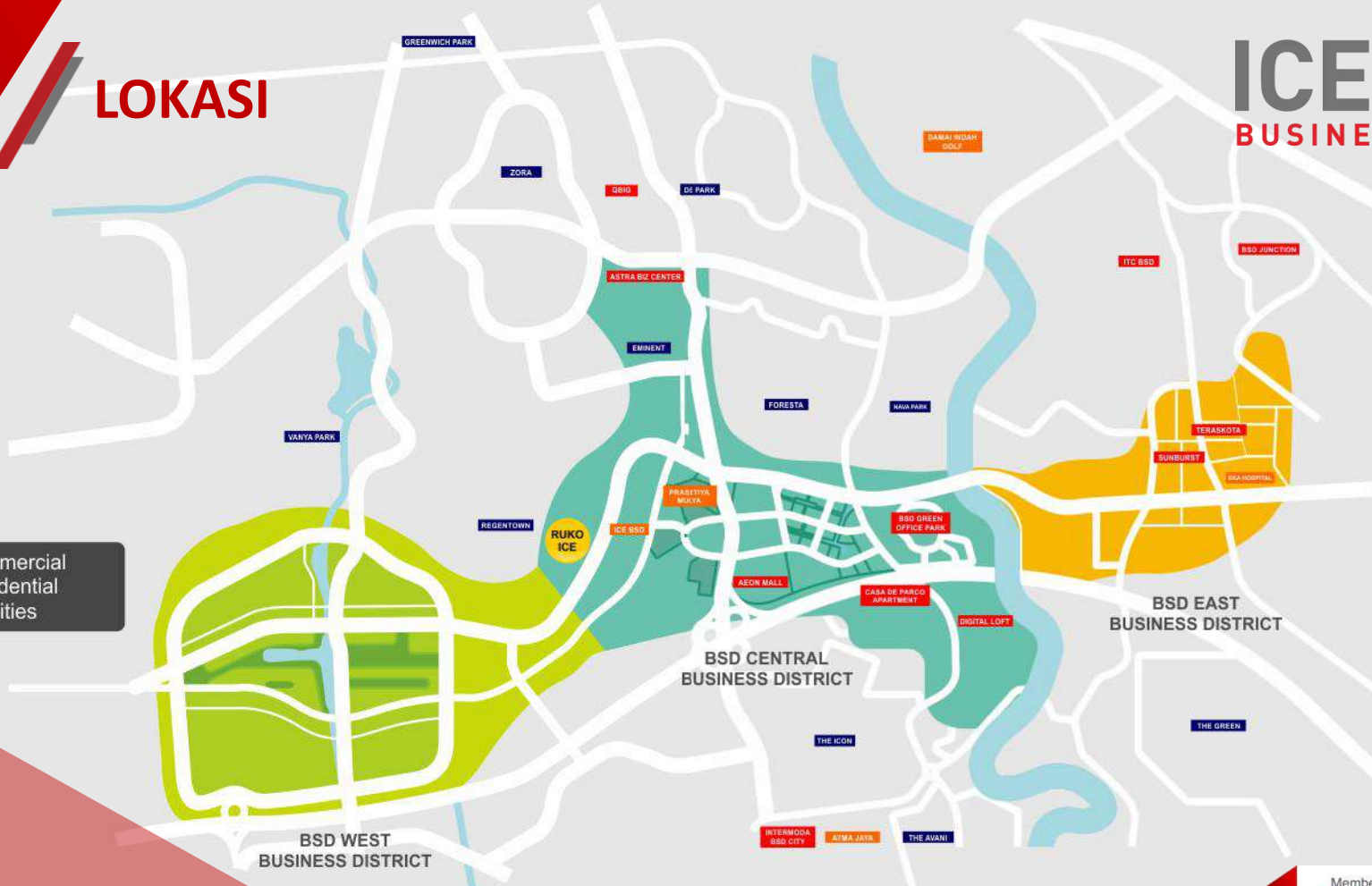


LOKASI

ICE

INDONESIA
CONVENTION
EXHIBITION
BUSINESSPARK

- Commercial
- Residential
- Facilities





ICE INDONESIA
CONVENTION
EXHIBITION
BUSINESS PARK

Kawasan Komersial Di Lokasi Premium

Berada pada akses jalan raya Utama BSD City dengan ROW 42 menuju BSD West Business District sebagai proyek perkotaan yang prestisius, ICE Business Park hadir sebagai pionir fasilitas komersial ritel di West BSD City.

ICE Business Park terletak didepan ICE (Indonesia Convention Exhibition) BSD City yang merupakan pusat konvensi dan pameran terbesar di Indonesia, sehingga memberikan potensi bisnis serta peluang investasi yang menguntungkan.

DESAIN ARSITEKTUR MODERN

ICE INDONESIA
CONVENTION
EXHIBITION
BUSINESSPARK



DESAIN ARSITEKTUR MODERN

ICE INDONESIA
CONVENTION
EXHIBITION
BUSINESSPARK



DESAIN ARSITEKTUR MODERN

ICE INDONESIA
CONVENTION
EXHIBITION
BUSINESSPARK



DESAIN ARSITEKTUR MODERN

ICE
INDONESIA
CONVENTION
EXHIBITION
BUSINESS PARK



BLOKPLAN

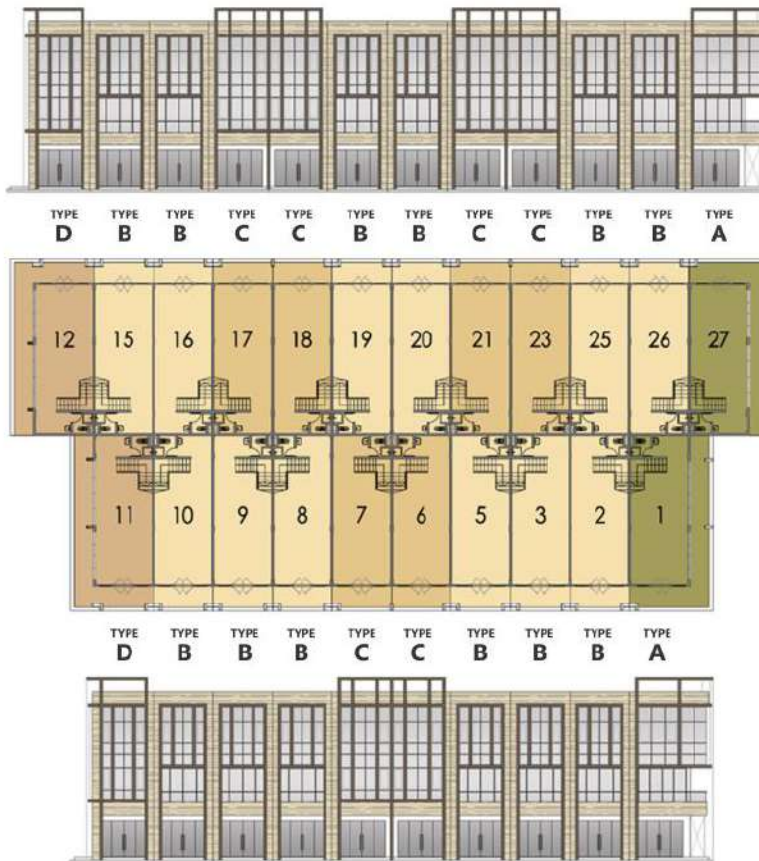
ICE INDONESIA
CONVENTION
EXHIBITION
BUSINESSPARK



ROW 42

ICE BSD

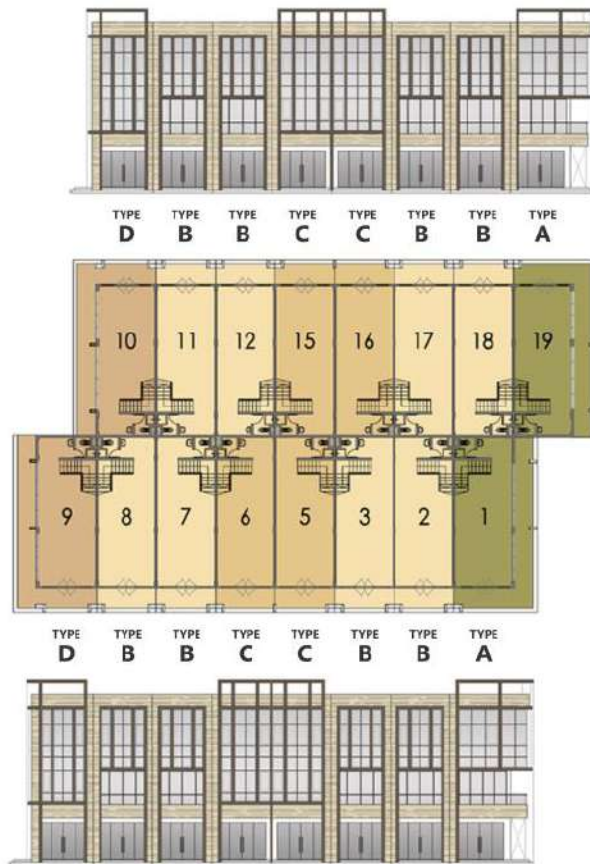
BLOK A



BLOK B



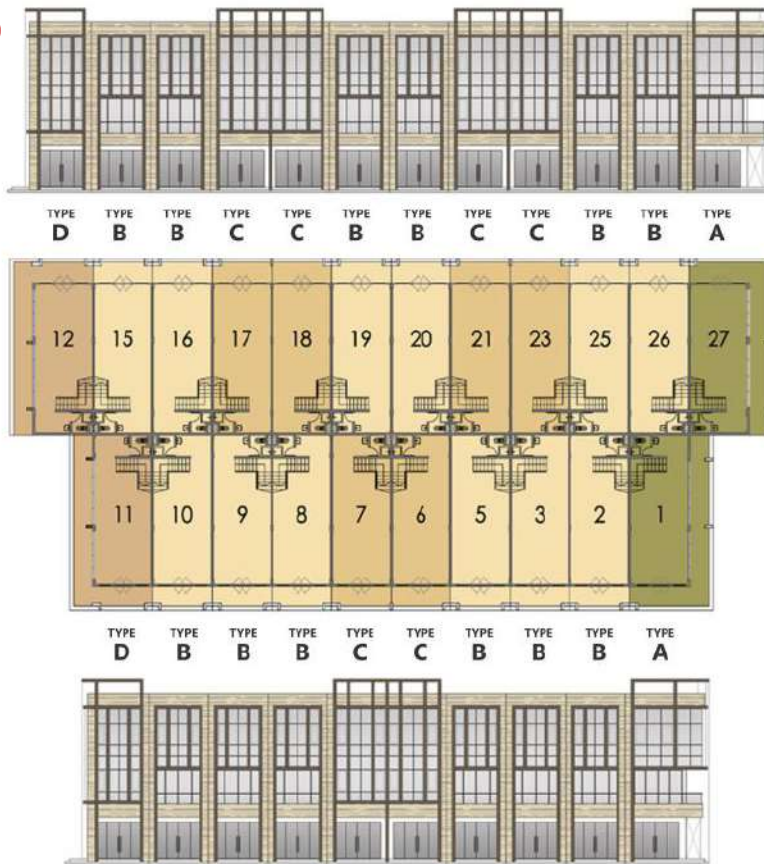
BLOK C



ICE INDONESIA
CONVENTION
EXHIBITION
BUSINESSPARK

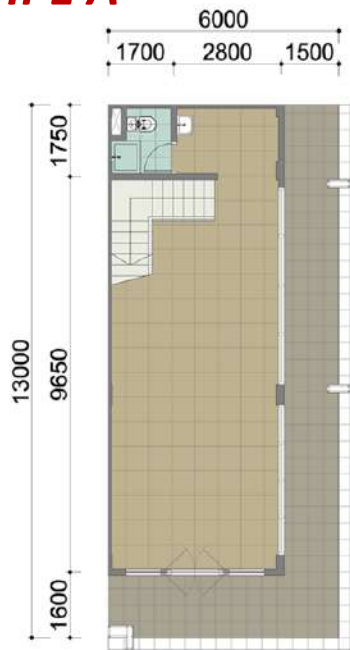


BLOK D

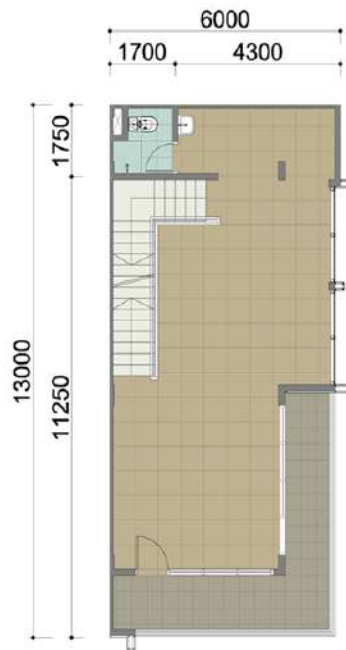


FLOORPLAN

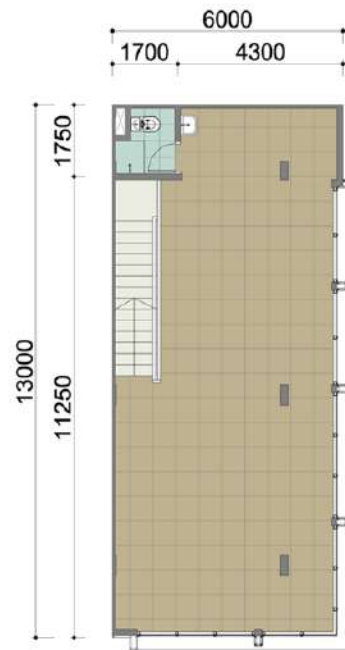
TIPE A



LANTAI DASAR



LANTAI 1

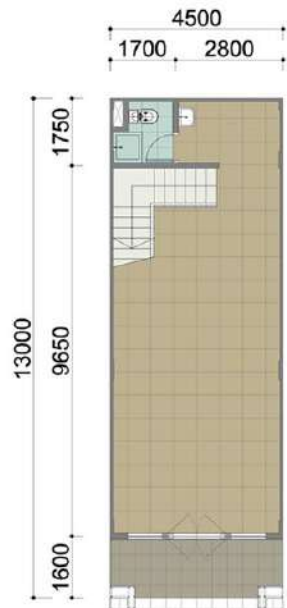


LANTAI 2

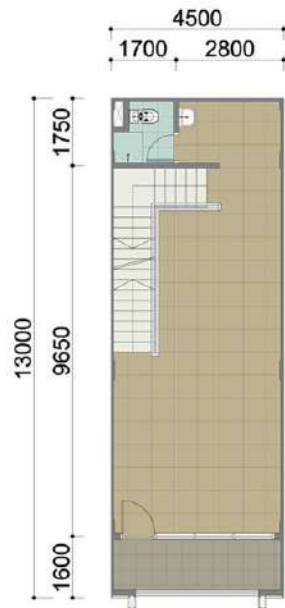


FLOORPLAN

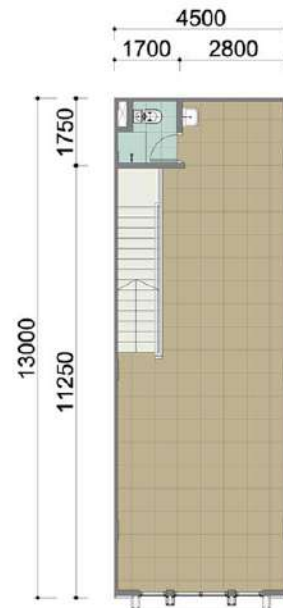
TIPE B



LANTAI DASAR



LANTAI 1

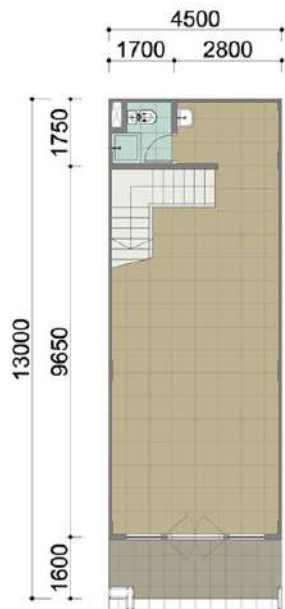


LANTAI 2

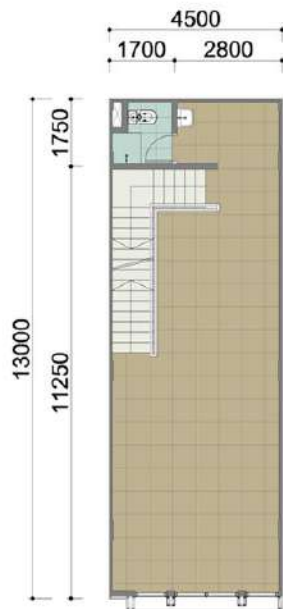


FLOORPLAN

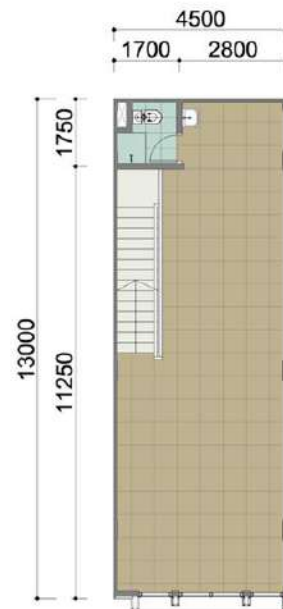
TIPE C



LANTAI DASAR



LANTAI 1

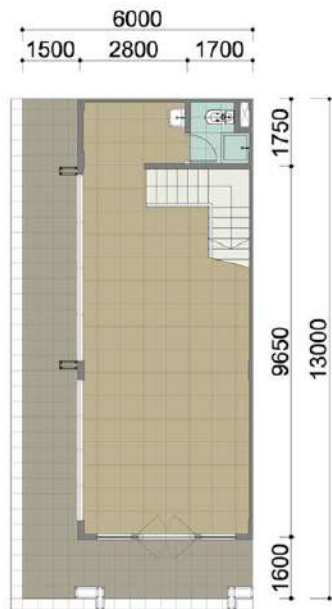


LANTAI 2

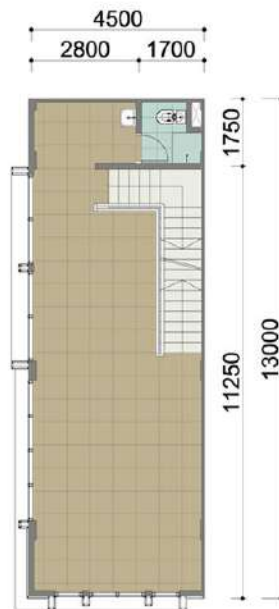


FLOORPLAN

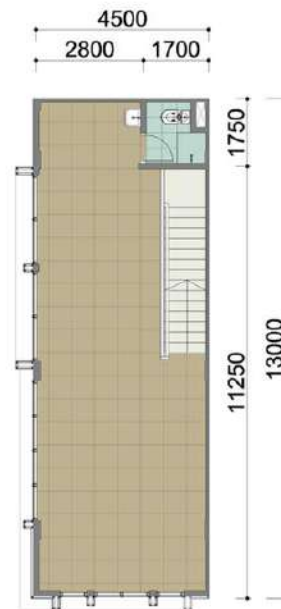
TIPE D



LANTAI DASAR



LANTAI 1



LANTAI 2



SPEKIFIKASI

Pondasi

Tiang Pancang : Mini Pile

Lantai

Teras : Non-slip Homogeneous Tile
Ruang Dalam : Homogeneous Tile
KM/WC : Non-slip Homogeneous Tile

Dinding

Pengisi : Bata merah / Ringan
Penutup : Plester aci + cat

Atap

Konstruksi : Baja Ringan
Penutup : Zinalume

Plafond

Bangunan utama : Gypsum board

Daun Pintu & Jendela

Daun Pintu Utama : Tempered Glass
Kaca Jendela : Kaca dengan rangka aluminium

Fasad

: - kaca dengan rangka aluminium
- homogeneous tile

Sanitair

: Toto / Setara

Elektrikal

: 2.200 VA

Telepon

: 1 line

Water Supply

: PAM

The background features abstract geometric shapes in red and grey. A large red shape is in the top-left corner, and another red shape is in the bottom-left corner. A grey shape is in the bottom-right corner. The central area is white.

THANK YOU