


KANADE

LUXURY IN HARMONY

A photograph of a family of three standing on a balcony at sunset. The father is in the center, holding a baby on his back. The mother is on the right, looking towards the father and baby. The scene is bathed in warm, golden light from the setting sun, creating a soft, intimate atmosphere. The background shows a blurred cityscape or landscape.

Maximizing all aspects
contained, Kanade creates a
luxurious harmony and
provides a living experience
that will not be found
anywhere

Ultimate Design

Ultimate Material

Ultimate Facilities

Ultimate Product

Ultimate Design

KANADE
LUXURY IN HARMONY

Ultimate Design

Modern design complete with maximum airflow and natural lighting for outdoor sensation in every corner, making luxurious new normal architecture comes true



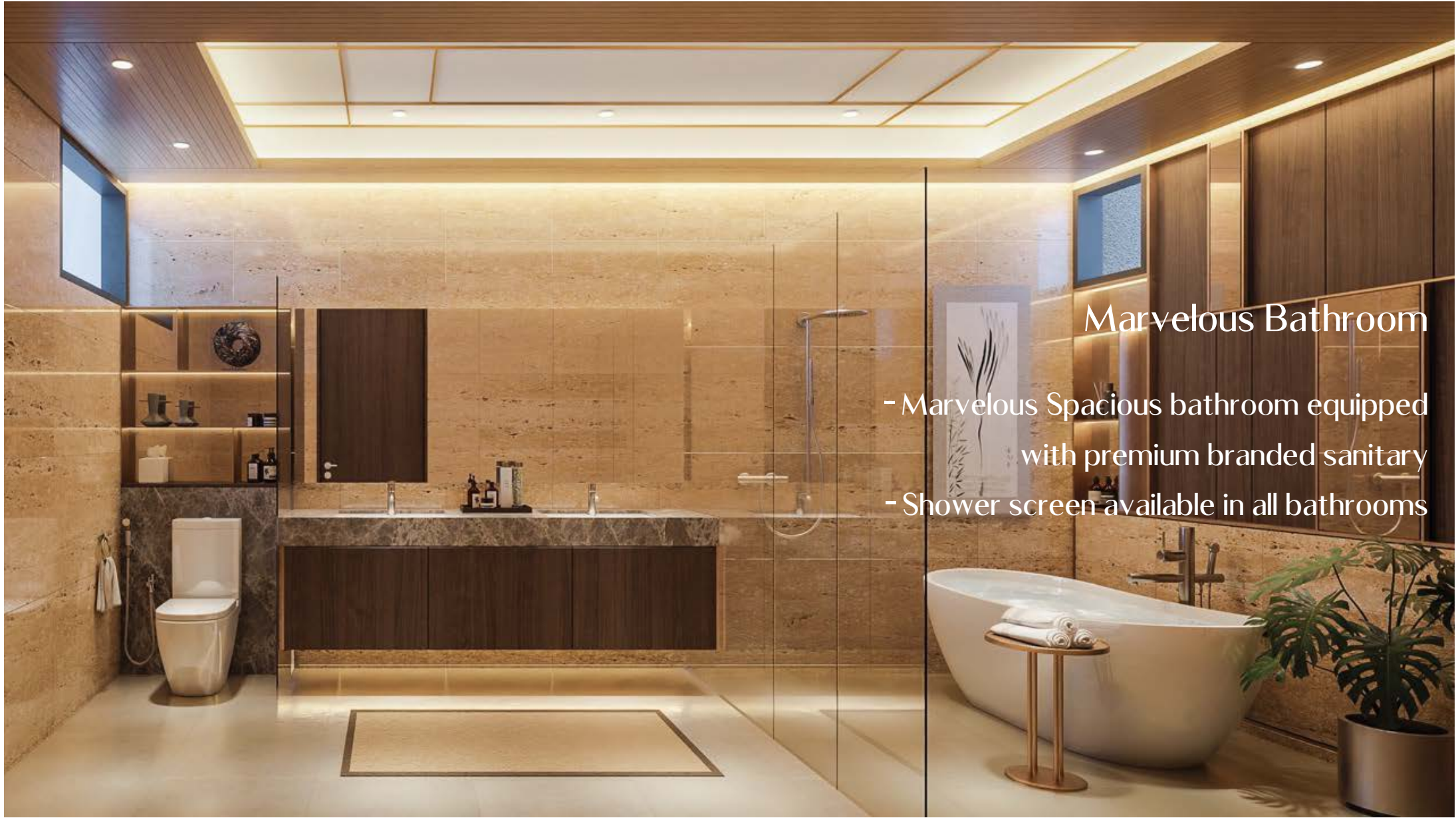
KANADE
LUXURY IN HARMONY

Double volume void in living room
combine expansive space for living
with many rooms* up to :

- 2 master bedrooms with ensuite bathroom
- 3 typical bedrooms with ensuite bathroom
- 5 Bathrooms | 2 Bathtubs | 2 Powder Rooms
- Family Room in Every Floor
- 3 Terrace Garden
- 1 Dry Kitchen
- 1 Wet Kitchen
- 2 Balconies
- Elevator
- 4 Carparks & Motorbike
- Maid Bedroom, Bathroom & Kitchen
- Storage

*terms & conditions apply





Marvelous Bathroom

- Marvelous Spacious bathroom equipped with premium branded sanitary
- Shower screen available in all bathrooms

KANADE
LUXURY IN HARMONY

Master Bedroom

Large Multifunction Space at Your
Convenience



*terms & conditions apply

KANADE
LUXURY IN HARMONY

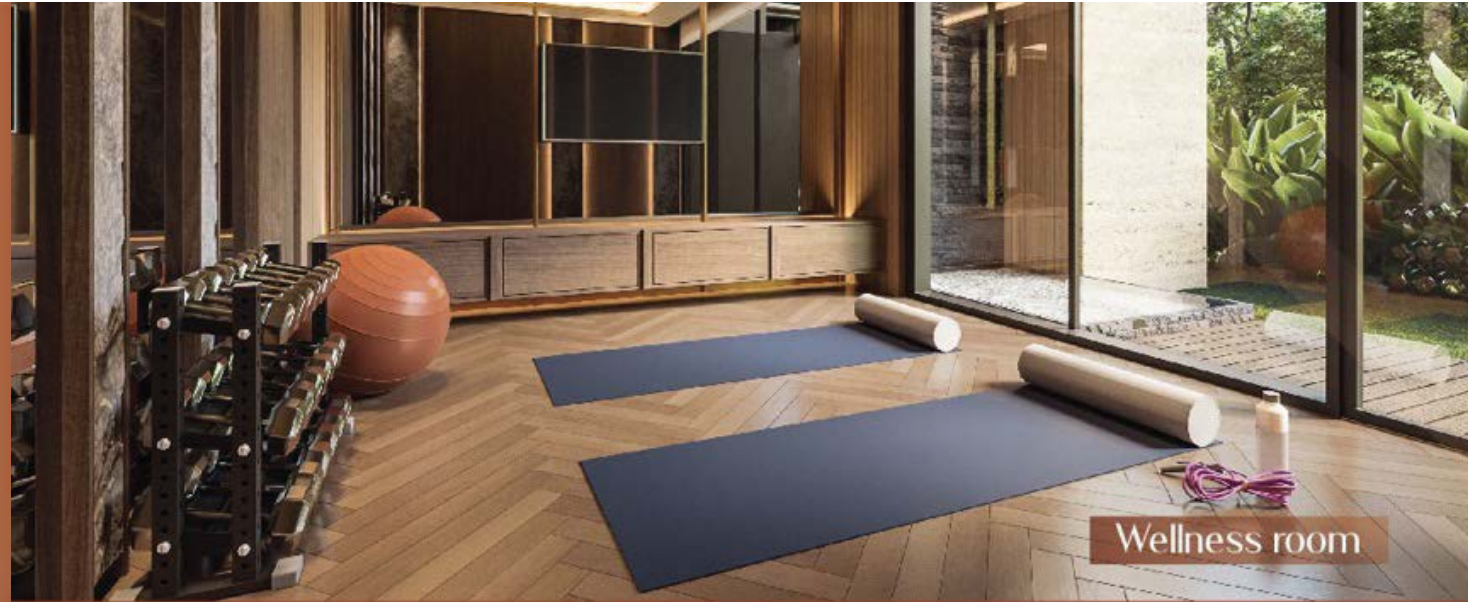
Balcony

For Enjoying Natural Light and Air



KANADE
LUXURY IN HARMONY

All functional areas facing
natural ventilate internal
courtyard



Ultimate Material

KANADE
LUXURY IN HARMONY

Ultimate Material

Best branded material which you
can only find at The Zora, makes
it the most valuable product in
BSD City



KANADE
LUXURY IN HARMONY

Ultimate
Material



Water Heater

Using top and trusted water heater brand gives high efficiency, energy saving, environmentally friendly and safe to use



Elevator

To aid a better living for each family members in every generations

KANADE
LUXURY IN HARMONY

Ultimate
Material



Marble

Gives a distinct, unique style to a home and luxurious living



Low E-Glass

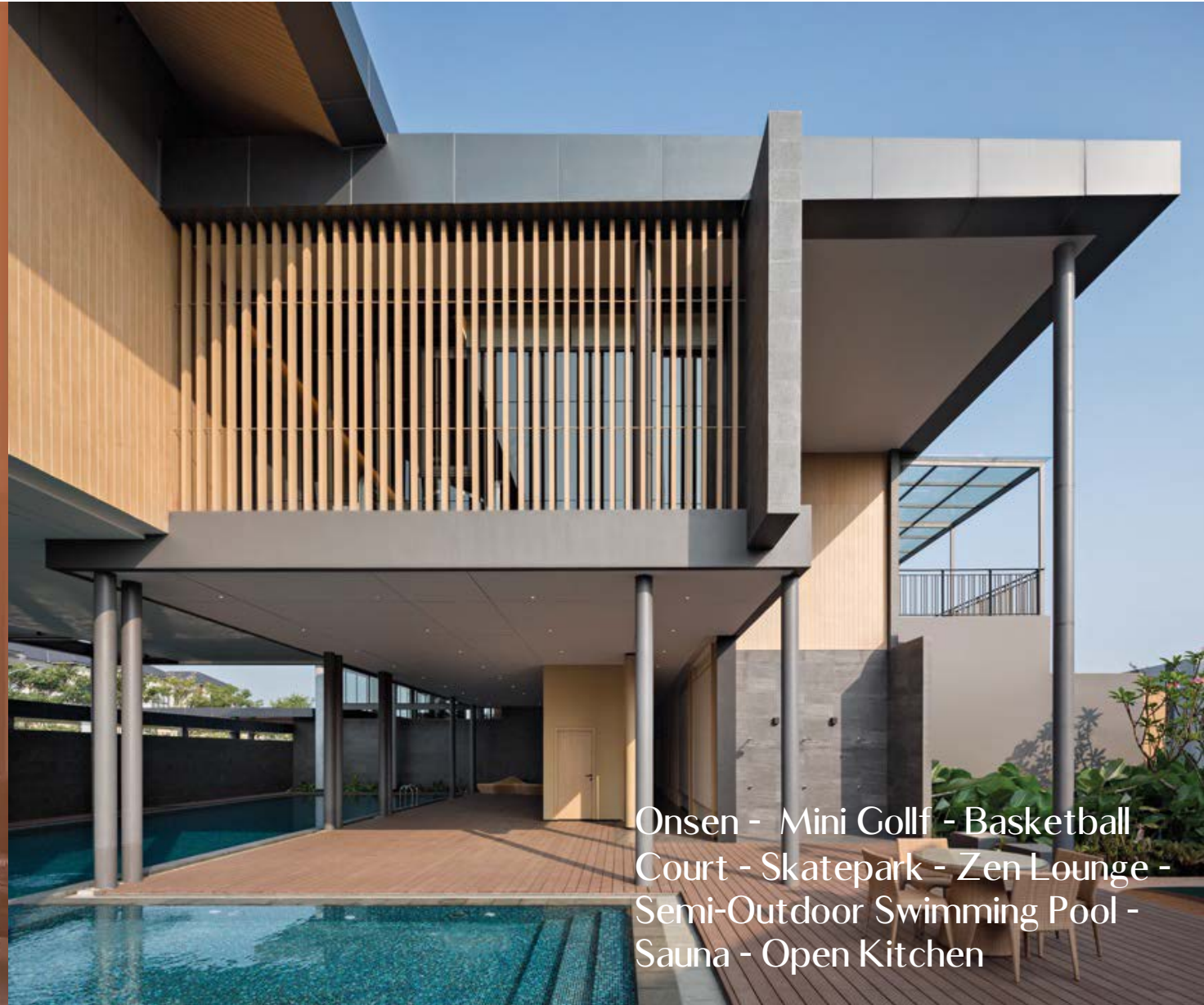
Low E-Glass coating keeps the temperature at your home low

Ultimate Facilities

KANADE
LUXURY IN HARMONY

Ultimate Facilities

Surrounded by a special area that contains complete life support facilities that are perfect for the whole family



Onsen - Mini Golf - Basketball
Court - Skatepark - Zen Lounge -
Semi-Outdoor Swimming Pool -
Sauna - Open Kitchen

KANADE
LUXURY IN HARMONY

Oregano Park

A Modern Japanese Design
Garden



The Ultimate Product

Type 12

12 x 22



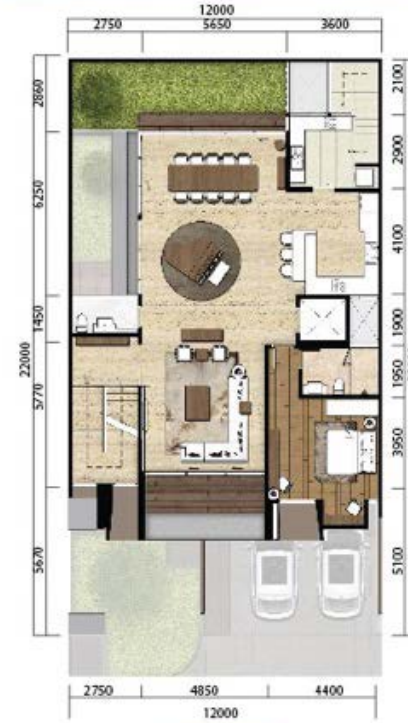
Ultimate Product



Type 12 | LA 264 / BA 485



1st Floor



2nd Floor



3rd Floor

- | | | | | | | | |
|--|---|--|---|--|--|---|---|
| 
2
Master Bedrooms with
Ensuite Bathroom | 
3
Typical Bedrooms with
Ensuite Bathroom | 
1
Maid Bedroom and
Bathroom | 
5
Bathrooms | 
2
Bathtubs | 
2
Powder Rooms | 
1
Family Hall | 
1
Living Room |
| 
2
Terrace Garden | 
1
Maid Kitchen | 
1
Wet Kitchen | 
1
Dry Kitchen | 
1
Elevator | 
1
Storage | 
1
Balcony | 
4
Carparks
+ Motorbike |





Type 10

10 x 20



KANADE

LUXURY IN HARMONY

Ultimate Product

Type 10 | LA 200 / BA 358



1st Floor

2nd Floor

3rd Floor



2
Master Bedrooms
with
Ensuite Bathrooms



2
Typical Bedrooms
with
Ensuite Bathroom



1
Maid Bedroom
and Bathroom



5
Bathrooms



2
Bathtubs



2
Powder Rooms



1
Family Halls



1
Living Room



2
Terrace Garden



1
Maid Kitchen



1
Wet Kitchen



1
Dry Kitchen



1
Elevator



2
Balconies



3
Carparks
+ Motorbike





Type 8+

8 x 17



Ultimate Product

Type 8+ | LA 136 / BA 242



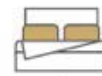
1st Floor



2nd Floor



3rd Floor



1
Master Bedroom with
Ensuite Bathroom



3
Typical Bedrooms with
Ensuite Bathroom



1
Maid Bedroom and
Bathroom



4
Bathrooms



1
Powder Room



1
Family Hall



1
Living Room



2
Terrace Garden



1
Maid Kitchen



1
Wet Kitchen



1
Dry Kitchen



1
Storage



1
Balcony



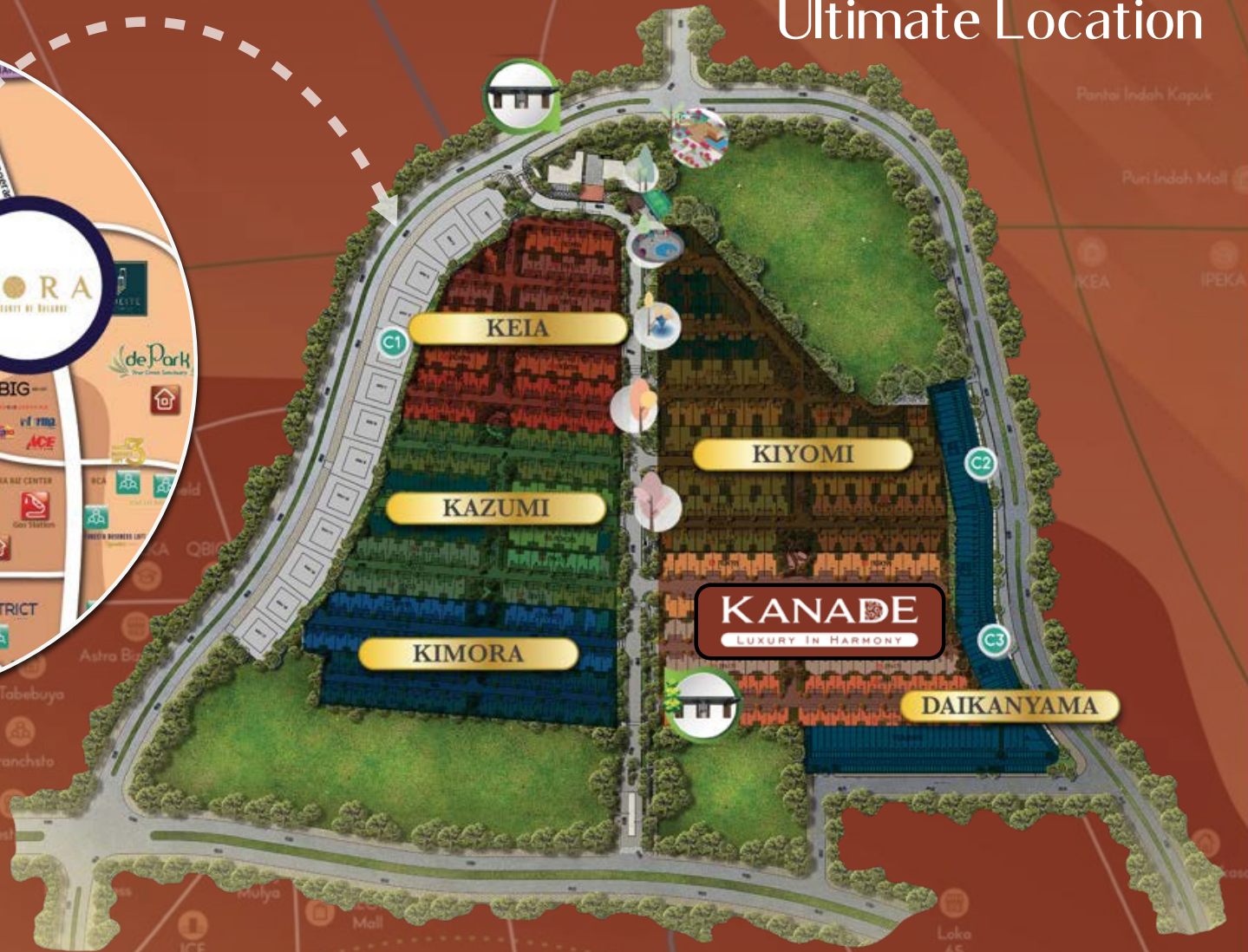
2
Carports





Own This Ultimate Product Now

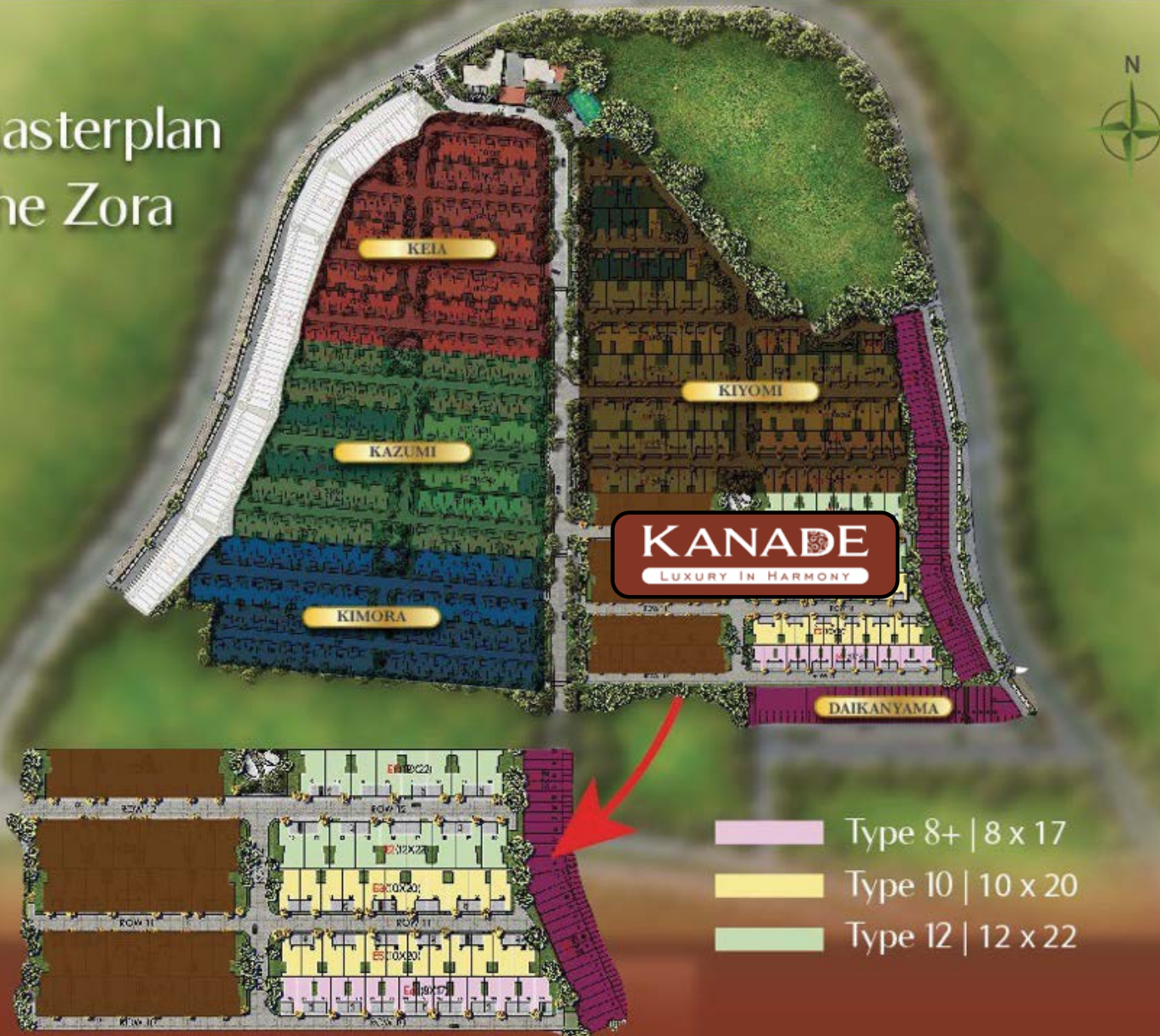
Ultimate Location



KANADE
LUXURY IN HARMONY

Choose Your
Ultimate
Product

Masterplan The Zora



KANADE

LUXURY IN HARMONY

The Best Specification with Well-Known Brand in Its Class

Specification

Foundation	Mini Pile	
Wall Finishes	Exterior	Homogenous Tile & Weather Protection Paint
	Interior	Low VOC (Volatile Organic Compound) Interior Paint
Floor Finishes	Bathroom	Homogenous Tile
	Living & Dining Area	Imported Marble
	Internal Staircase	Imported Marble
	Bedroom	High Quality Vinyl Flooring
	Bathroom	Homogenous Tile
	Service Area	Homogenous Tile
	Garage & Carport Balcony	Homogenous Tile Homogenous Tile Pitched Roof with Lightweight Steel Frame & Concrete Roof Tile; Concrete Slab PremiumUPVC Roof with Lightweight Steel Frame
Roofing	Main Roof Carport Canopy	
Door & Window	Main Entrance Door	Solid Engineered Wood Door
	Interior Door	Honeycomb Engineered Wood Door
Ceiling	Window	High Quality Aluminum Frames
	Interior	Gypsum, Full System Metal Furring Frame with Shadow Line
Sanitary	Exterior & Bathroom	Gypsum Moisture Resistance, Full System Metal Furring Frame with Shadow Line
	Master Bathroom	Bathtub T 12 : 2 units T 10 : 1 unit Undercounter Lavatory with Vanity Table Hot & Cold Shower Set

The Best Specification with Well-Known Brand in Its Class



Powder Room

Closed Coupled Toilet with Jet Washer

Semi Undercounter Lavatory with Vanity Table

Kids Bathroom

Closed Coupled Toilet with Jet Washer

Semi Undercounter Lavatory with Vanity Table

Hot & Cold Shower Set

Closed Coupled Toilet with Jet Washer

Wet Kitchen

Storage Cabinet system with Sink, Hot & Cold
Faucet, Gas Stove and Hood

Dry Kitchen

Storage Cabinet system with Sink, Hot & Cold
Faucet, Gas Stove, and Hood

Balcony with Glass Railing

Water Supply

PDAM

Electrical Supply Capacity

4.400VA (T 8+); 7.700 VA (T 12 & T 10)

Environmental Friendly Features

Low Emissivity (Low-E) Glass @ Living –Dining Area

Centralized Solar Water Heater

Automatic Emergency Lamp Activation During Power Outage at Living Room, Main Stair & Master Bedroom (3 units)

Special Features

Carport Canopy (2 cars parking)

Garage

T 12 (2 cars + 1 motorcycle parking)

T 10 (1 car + 1 motorcycle parking)

Automated Garage Door

4-ways Digital Door Lock @ Main Entrance Door
(Pin, Finger, Bluetooth & Manual Key)

Smart Home Network & CCTV system

High Quality Aluminum Window Frames, Bigger Window Area

Home Elevator (3 pax)

Imported Marble Floor for Main Area

Wet Kitchen Set Cabinet

Dry Kitchen Set Cabinet

Maid Kitchen

4 Cubicle Showers : Master Bathroom and Kids Bathroom

Storage Room

AC Split Wall(T 12,10,8+) and AC Split Duct (T 12 & T 10)

Promo & Benefit Early Bird

Terms of Payment

KPR*	Cash Installment*
DP 15% - 20X	24X

*Terms and Conditions Applied

Promo for Customer

AC FOR ALL BEDROOMS
& LIVING ROOMS*

DISCOUNT*

LEAKAGE WARRANTY*

SHOPPING VOUCHER*

GADGET*



*Terms and Conditions Applied



the
ZORA
BEAUTY OF BALANCE

For Inquiry Call

021 2958 0089

 www.thezora.com  [@thezora.id](https://www.facebook.com/thezora.id)  [@thezorabsd](https://www.instagram.com/thezorabsd)

Marketing Suite : Samasana Clubhouse at The Zora BSD City,
Lengkong Kulon, Pagedangan, Tangerang Regency, Banten, 15331, Indonesia

Disclaimer : Pictures shown in this page are for illustration purpose only. Actual product may vary due to product enhancement.



**BSD DIAMOND
DEVELOPMENT**

Joint Venture of **TREI** TANGERANG REALTY INVESTMENT
a subsidiary of  **Mitsubishi Corporation**

Member of

